



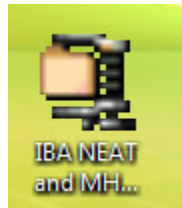
INDIANA BUILDERS ASSOCIATION

IBA HOME ENERGY CONSERVATION PROGRAM

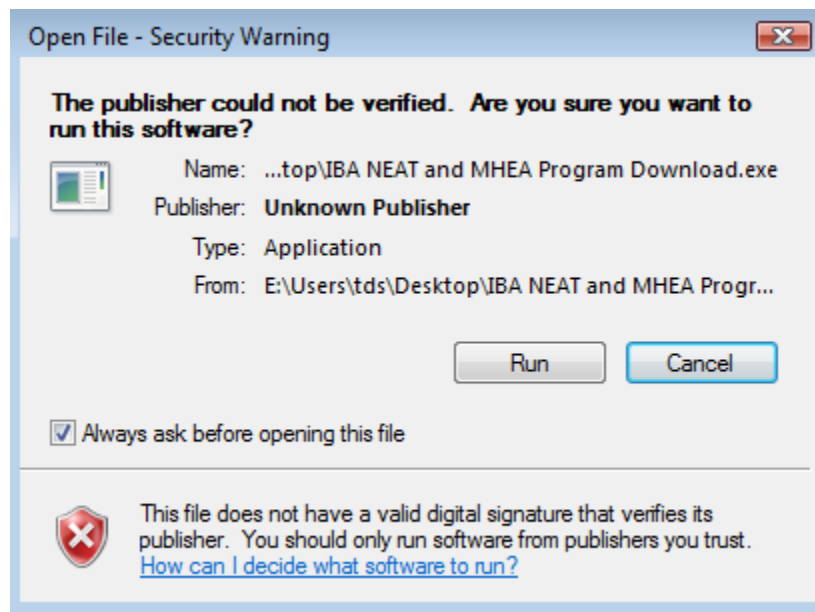
NEAT and MHEA Download and Instructions

Download instructions

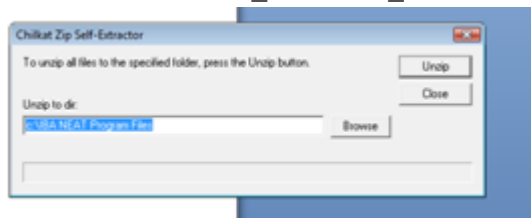
- 1) Go to the IBAENERGY.ORG web site and click the Download Info link on the home page.
- 2) Navigate to the bottom of the page and see the section “IBA NEAT / MHEA”
 - a. Select and download IBA NEAT and MHEA Program Download to your desktop
 - b. Double click the IBA NEAT and MHEA Program Download ICON



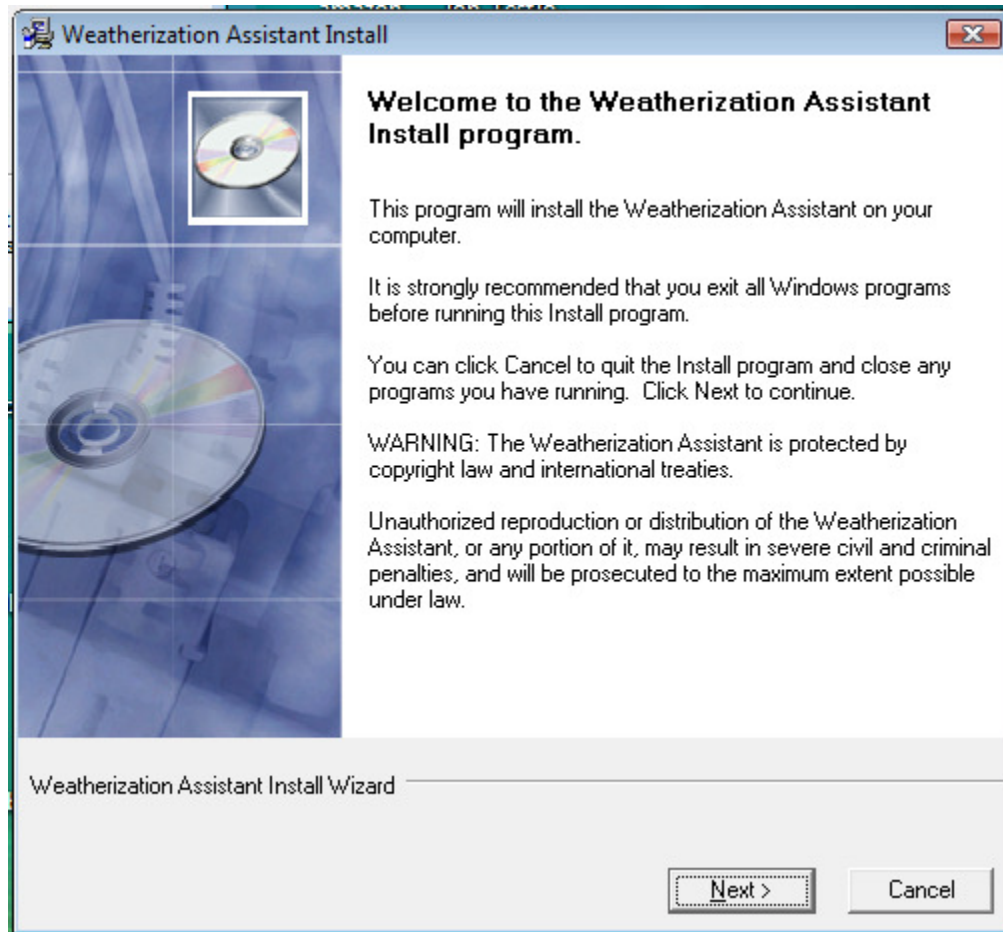
- c. Select “Run”



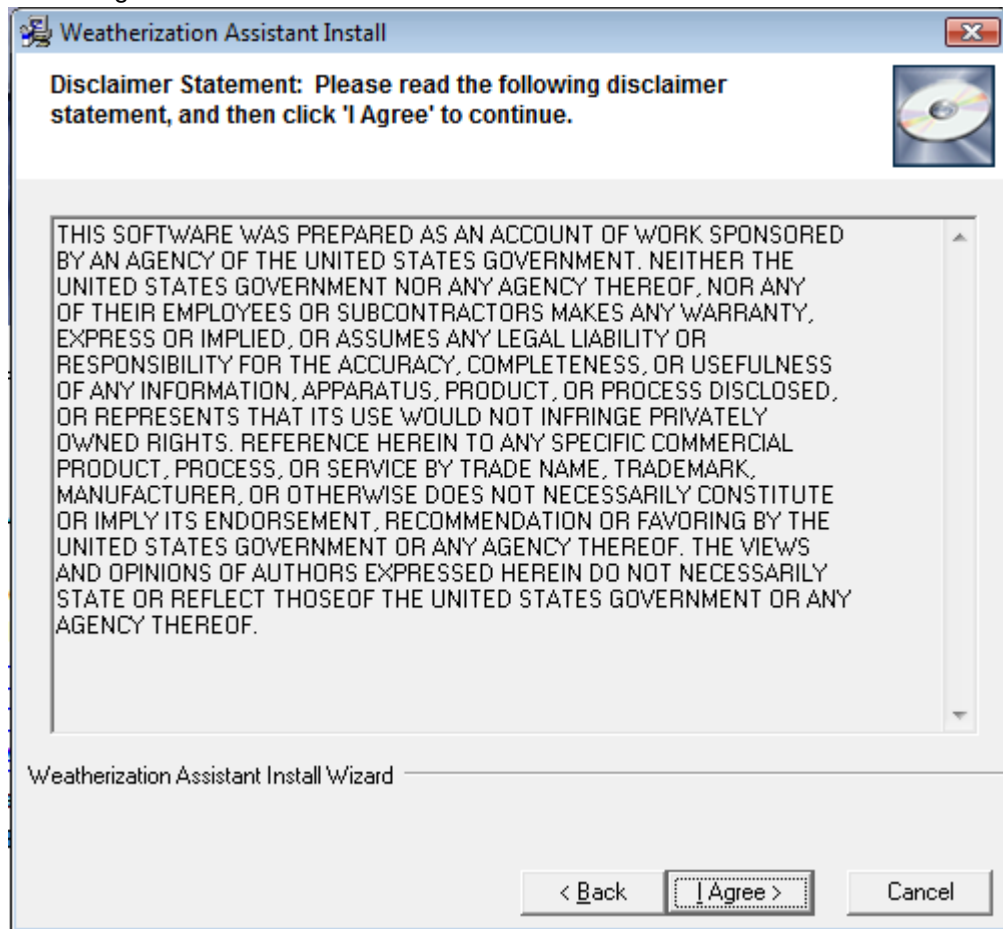
- d. The following menu will appear. Click the Unzip button and the files will be unzipped and store in the listed folder. The default path and folder name is “C:\IBA NEAT Program Files”. You will need this path and folder name later to connect to the IBA Cost Database “wa8-6_IBAVer1.0_8.6.0.4.mdb”



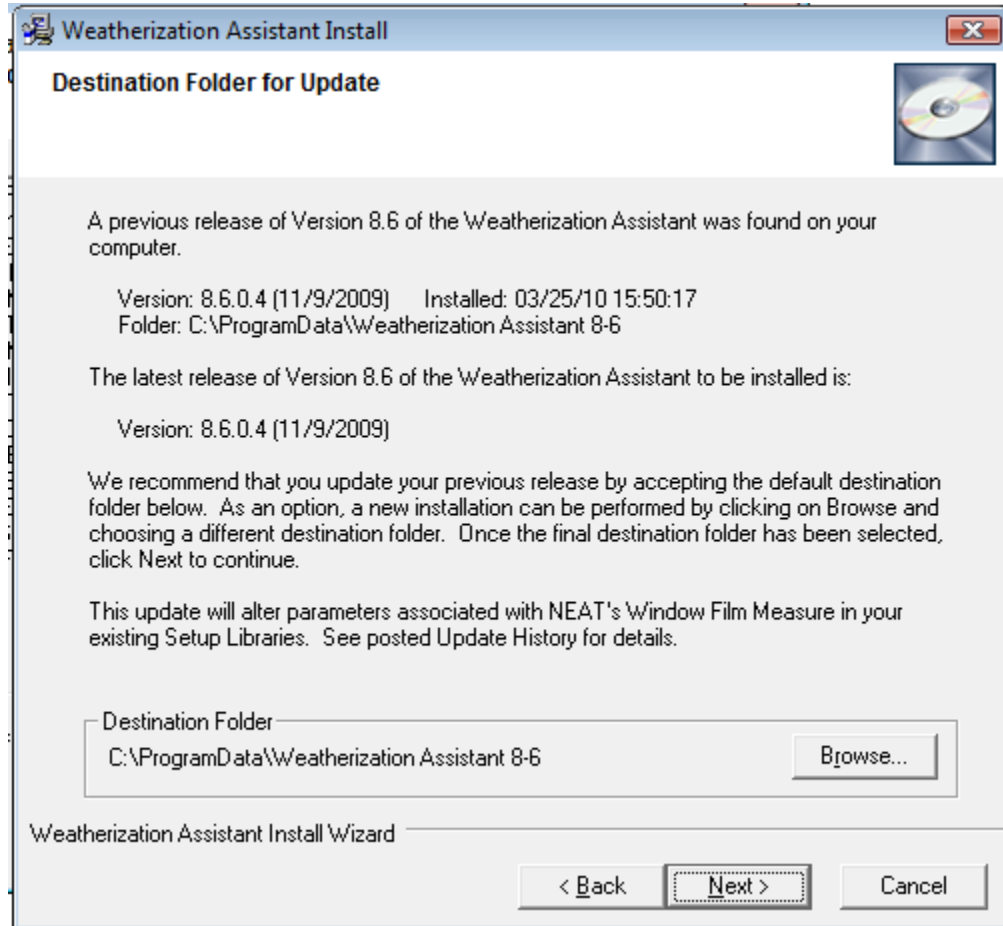
- e. Click Next



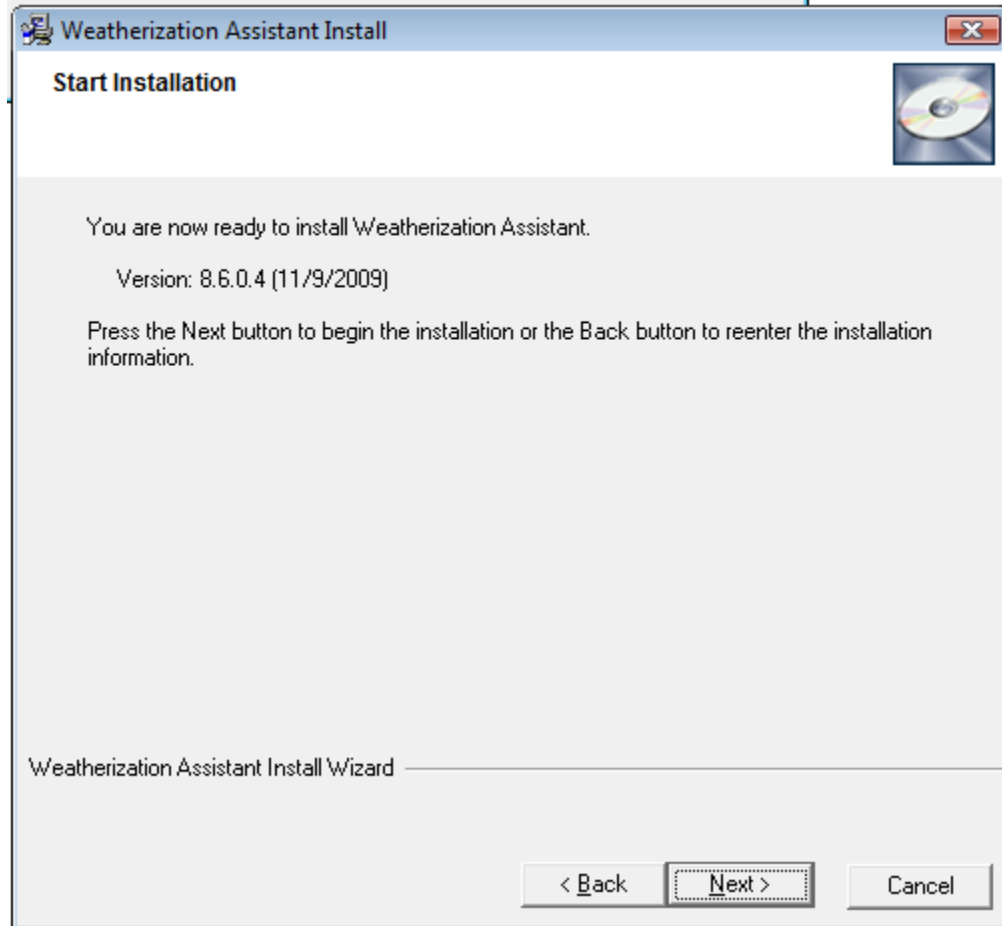
- f. Click "I Agree"



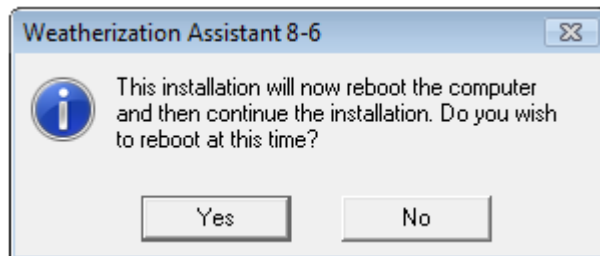
- g. Click "Next"



- h. Click “Next” to install the program



- i. Click “Yes” to complete the installation



- j. The Weatherization Assistant/IBA NEAT installation is complete.
k. Please refer to “IBA NEAT and MHEA Step by Step User Guide” for detailed instructions.
- 3) Download the following three files and store them on your desktop.
- a. IBA NEAT and MHEA Step by Step User Guide
 - b. IBA NEAT Forms
 - c. IBA MHEA Forms